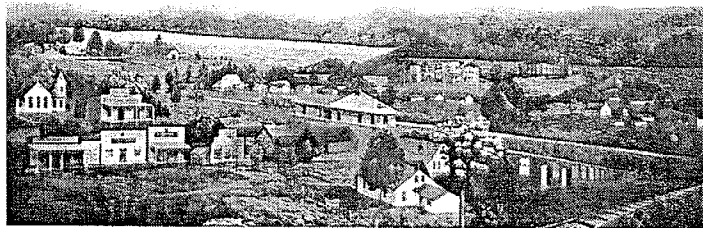


# Town of Englewood Zoning District Quick Reference Guide

	R-1 Low Density Residential	R-2 Medium Density Residential	R-3 High Density Residential
<b>Front Yard</b>	25'	25'	25'
<b>Rear Yard</b>	20' Principal Structure 10' Accessory Structure	20'	20'
<b>Side Yard</b>	15' One & Two Story Structures Add 5' Additional for Each Story >2	15' One & Two Story Structures Add 5' Additional for Each Story >2	15' One & Two Story Structures Add 5' Additional for Each Story >2
<b>Side Yard - Corner Lots</b>	Lots 50' Wide = 10' Setback Lots 60' Wide = 15' Setback Lots 70' Wide = 20' Setback Lots 75' or More = 25' Setback	Lots 50' Wide = 10' Setback Lots 60' Wide = 15' Setback Lots 70' Wide = 20' Setback Lots 75' or More = 25' Setback	Lots 50' Wide = 10' Setback Lots 60' Wide = 15' Setback Lots 70' Wide = 20' Setback Lots 75' or More = 25' Setback
<b>Lot Size</b>	15,000 Sq. Ft. 8,000 Sq. Ft. w/Public Sewer	15,000 Sq. Ft. 8,000 Sq. Ft. w/Public Sewer 2 Dwelling Units = 12,500 Sq. Ft.	15,000 Sq. Ft. 8,000 Sq. Ft. w/Public Sewer
<b>Lot Width</b>	75'	75'	75'
<b>Height Restrictions</b>	35' or 2 1/2 Stories	35' or 2 1/2 Stories	35' or 2 1/2 Stories
<b>Street Frontage</b>	Principal Structure Must Face Public Street	Principal Structure(s) Must Face Public Street	Principal Structure(s) Must Face Public Street



ENGLEWOOD HISTORICAL AERIAL  
1850 - 1925

Printed March 7, 2011

This Guide is for REFERENCE ONLY, and it is NOT a substitute for the requirements of the Englewood Zoning Ordinance.  
Please refer to the latest edition of the Englewood Zoning Ordinance.

# Town of Englewood Zoning District Quick Reference Guide

	C-1 Central Business	C-2 General Commercial	I-1 Industrial
<b>Front Yard</b>	No Setback but 5' Sidewalk Req'd Full Length of Structure	35'	30'
<b>Rear Yard</b>	30' for Buildings Serviced from the Rear 25' From Residential Districts	10'	30'
	No Setback if Not Serviced from the Rear or Adjacent to Residential	30' for Buildings Serviced from the Rear 25' From Residential Districts	No Setback Req'd for Lots Using Railroad
<b>Side Yard</b>	No Setback	15'	20'
	15' Buffer Strip if Adjacent to Residential	25' From Residential Districts	50' From Residential Districts
	5' Sidewalk Req'd Full Length of Structure Along Public Streets		No Setback Req'd for Lots Using Railroad
<b>Lot Size</b>	No	10,000 Sq. Ft. w/Public Sewer	2 Acres w/Public Water & Sewer
		15,000 Sq. Ft. w/No Public Sewer	5 Acres w/out Public Sewer 5 Acres - No Water or Sewer - Req'd Planning Commission Approval
<b>Lot Width</b>		75'	150'
<b>Height Restrictions</b>	40' or 3 Stories	40' or 3 Stories	40' or 3 Stories

Printed March 7, 2011  
This Guide is for REFERENCE ONLY, and it is NOT a substitute for the requirements of the Englewood Zoning Ordinance.  
Please refer to the latest edition of the Englewood Zoning Ordinance.